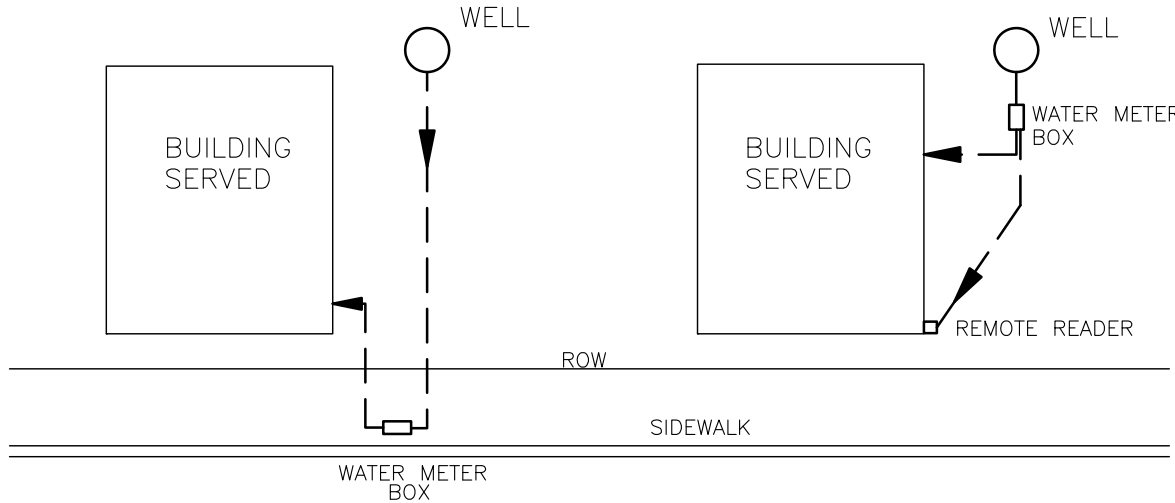
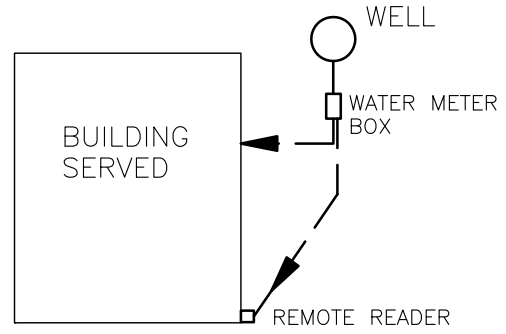


STANDARD CONFIGURATION



ALTERNATE CONFIGURATION
(must be approved by the Utilities Department)



GENERAL NOTES:

All commercial buildings served by public sewer and private well shall have the well metered for the purpose of assessing sewer charges.

The well meter shall consist of a conventional meter set in the public right of way in accordance with City Engineering Standards. With prior written approval of the Utilities Department, a meter set near the well with a remote reader mounted to the building or other permanent structure will be allowed.

The Property owner shall pay all fees established for these purposes.

The Property owner shall execute a Private Well Metering Agreement with the City for ongoing operation, maintenance, inspection, calibration, and repair or replacement of the well meter and related City facilities.

If a property receives water from both the public system and a private well, the customer will pay a sewer charge based on usage from both meters and a water charge based on usage from the public system meter.

The City shall own, operate and maintain the meter, remote reader and associated wiring. All other facilities shall be the responsibility of the property owner.

CONSTRUCTION NOTES:

For properties receiving water from both a private well and the public system, an approved backflow prevention device shall be installed on the service connection to the public system.

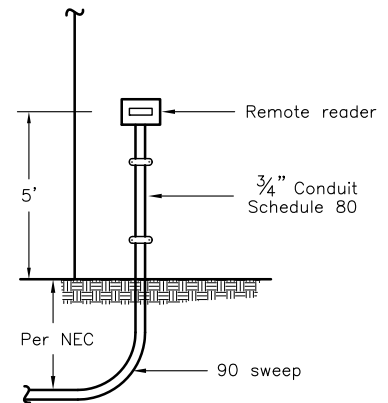
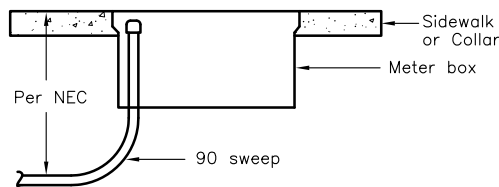
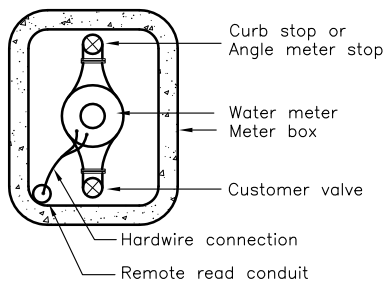
The proposed location of the water meter and remote reader shall be approved by the City Utilities Department prior to installation.

The meter and related facilities shall be installed in accordance with applicable City Standards. The meter box shall be set with the long dimension parallel to the curb to differentiate them from other meters.

A conduit and pull rope shall be installed in accordance with the NEC and City Specifications and Standards. The conduit shall enter the water meter box in such a manner as to not interfere with the installation, removal, and inspection of the meter. The conduit shall be stubbed up at the building and secured to the building at no less than two locations. Both ends of the conduit shall be capped with a slip cap, not welded or glued.

A space shall be provided to allow the remote reader to be securely mounted at 5' above grade.

All work shall be performed by an appropriately licensed contractor with the exception of the meter set, pulling of remote read wires, and installation of a remote read unit which will be completed by City crews with a 48 hour notice.



SEE ENGINEERING STANDARD #6210 FOR DETAILS

REVISIONS	BY	APP	DATE
New border	JDL	WAP	9-97
New Standard	BL	WAP	4-97
STANDARD CURRENT AS OF:		January 2010	



WELL METERING