

**GENERAL NOTES:**

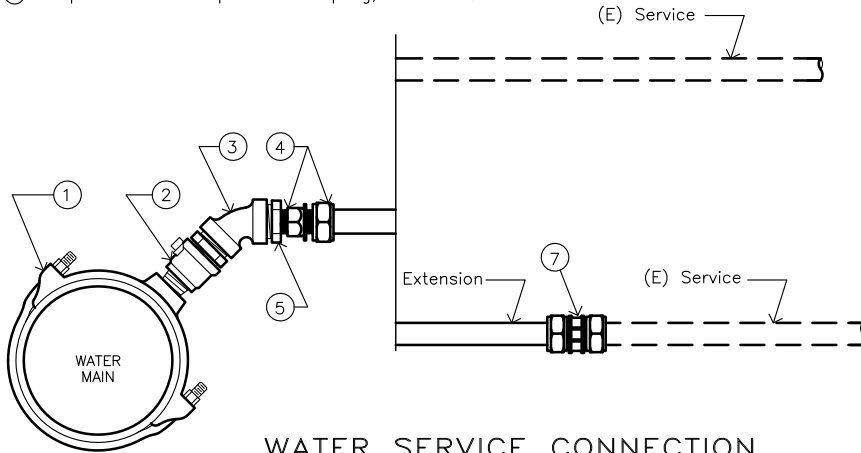
- A. If service line is lead, galvanized steel, or polybutylene, the entire service shall be replaced from the main to the meter per Eng. Std. #6210.
- B. Any meter boxes which do not meet current standards per Engineering Standard #6210 shall be upgraded to those standards.
- C. Households shall be notified at least one hour prior to water being shut off to make a connection.
- D. A 14 gauge insulated copper tracer wire shall be tied to the corp stop, and taped to the service line at 7' intervals. The wire shall be soldered to the existing tracer wire or existing copper service.

**CONSTRUCTION NOTES:**

- ① through ④ – See Engineering Standard #6210
- ⑤ Note: Add bell reducer and close nipple for existing 3/4" and 1 1/2" service lines.
- ⑦ Compression to compression coupling, J-2609SG

Type 1 – New main is closer to curb than existing main.  
 Type 2 – New main is farther from curb than existing main.  
 (PE = Polyethylene)

Type	(E)Service	Main
1	PE	Any
1	Copper	Non-metal

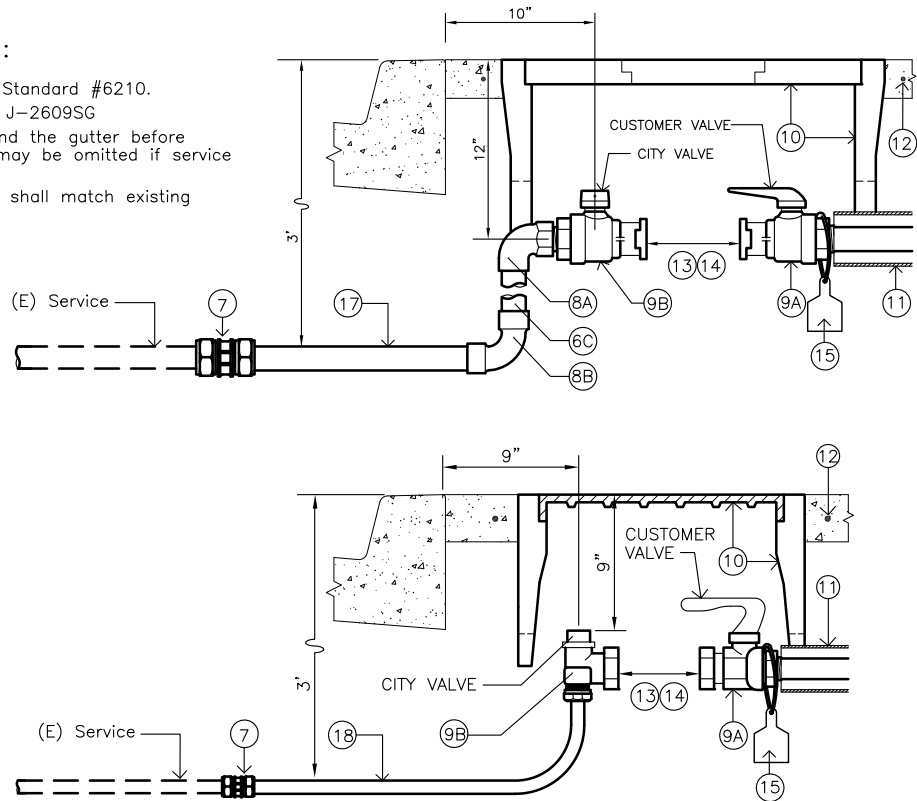


**WATER SERVICE CONNECTION TO NEW MAIN**

Type	Extension	(E)Service	Main
2	Copper/PE	PE	Any
2	Copper/PE	Copper	Non-metal
2	PE	Copper	Any

**CONSTRUCTION NOTES:**

- ⑥ and ⑧ through ⑯ – See Engineering Standard #6210.
- ⑦ Compression to compression coupling, J-2609SG
- ⑰ 2" (or 1 1/2") copper shall extend beyond the gutter before transition to polyethylene. Transition may be omitted if service is all copper.
- ⑱ Extensions on services 1" and smaller shall match existing size and material.



**WATER SERVICE METER BOX RELOCATION**

REVISIONS	BY	APP	DATE
Renumber notes	SR	BL	3-06
Construction notes	SR	JDW	10-03
Revised Note 5	MH	BL	10-05
STANDARD CURRENT AS OF: January 2010			



**WATER SERVICE CONNECTIONS**